



Pioneer Valley Kennel Club, Inc  
P.O. Box 407, Greenfield, MA 01302

January 2015



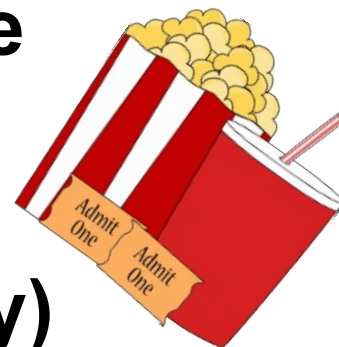
**Monday, January 19, 6:30 pm**

**Meeting & a Movie**

**Brown Motors**

**Greenfield MA**

**Come laugh (or cry)  
with friends**



***PVKC MEMBERSHIP DUES – Past Due***

**SO PAY THEM NOW**

Please print, complete, sign and mail the form (pages 7 & 8)



## President's Message

Here we are again! Saying goodbye to one year and looking forward to what the new one will bring. New hopes, new dreams and yes, new disappointments. Some complain that in our little valley we aren't connected to the outside world via 24/7 internet. I am not so sure that is something to aspire to. Maybe, just maybe, we are too connected. We seem to feel that life must be a series of events. Maybe we are missing the real event, LIFE. We only get on shot at it so make count!

I will close with the lyrics of a song written by Casey Beathard, Dean Dillon and Jessie Jo Dillon and sung by the great George Strait.

*Life's not the breath you take, the breathing in and out  
That get's you through the day, ain't what it's all about  
Just might miss the point if you don't slow down the pace  
Life's not the breaths you take but the moments that take your breath away*

Darci

---

### PVKC Contacts

President:  
Darci Lee Brown (413) 498-5006

Membership Chair:  
Marcia Evans (413) 221-7577

Vice President:  
Sheila Blanker (413) 498-5704

Training Information:                   :  
(802) 722-9848

Recording Secretary:  
Sue Meachem (802) 257-7532

Breeder Referral:  
Chair: Gillian Wilson (413) 863-8217  
Rosemary Wortman (978) 939-2022  
Kathy Georgianna ([georgiannak@prodigy.net](mailto:georgiannak@prodigy.net))

Correspondence Secretary:  
Linda Gagnon (978) 544-8933

Treasurer:  
Shane Peters (978) 633-4164

Web Page: [www.pioneervalleykennelclub.com](http://www.pioneervalleykennelclub.com)

Board of Directors:  
Karen Duprat (413-569-2029)  
Lori Carver (413- 634-5684)  
Marcia Evans (413) 221-7577  
Vacant 2-year position  
Storm Coutu (603-239-6248)  
Kathy Georgianna (413) 628-4606

AKC Delegate:  
Peg Vohr (413) 498-2609

Training Chair:  
Judith Suarez (802) 722-9848



**PioneerTails**

Deadlines  
Jan 26, 2015

**For advertising  
contact Judith**

### Newsletter Contacts:

Peg Vohr  
(413) 498-2609

Judith Suarez  
(802) 722-9848; [handart@sover.net](mailto:handart@sover.net)



## SHOW NEWS – PEG VOHR

**Doris Meadowcroft:** After two back-to-back 5 pt majors in Orlando, I am proud to announce a new champion, *Ch. Darcroft the Boys 'Round Here* (pending AKC confirmation). Thank you to my handler Blake Hansen and his wonderful team and also to my special friend, Edna Corney who kept me informed of all the happenings since I couldn't be there. Hope everyone had good luck the Eukanuba.



**Sheila Blanker:** Woo Hoo!! I am pleased to announce that our boy, *Northern Light's Darion*, CD, RA, WPD has qualified in Rally Advanced for the 2015 AKC Rally National Championships to be held March 14 & 15th, 2015 at Purina Farms in MO. To be eligible to compete dogs must have earned scores of 90 or over for all three of their legs towards their Rally title – and our *Darion* did. One of only three Siberians earning their Rally Advanced title to do so!!

**Sue Meachem:** It's official now. *Bob's* (AKC/UKC GCH Cabot N Seabreeze Night Train To Wicksford) Canadian CH certificate arrived.

**Lori Carver:** There was a surprise in my mailbox today. *Spirit's* Championship certificate from Canada! Apparently he finished at the August shows we went to. I thought he still needed one more point. Awesome Christmas present. He is now AKC & UKC GCH, CKC CH *Freedoms Spirit of the Storm at Seabreez N Wicksfrd*. And from the November Springfield Cluster – another great thanksgiving cluster. *Spirit* the Field Spaniel was select on Saturday and Sunday for a total of 10 grand points. *Captain* the Clumber Spaniel was winners 3 of the days for 7





total points. One was a 5 point major because he took breed over 3 specials! One more point to go. And I got to show my Havanese girl *Uh Oh* (owned by **Karen Duprat**) a couple days and took a select in a really strong breed.

**Karen Duprat:** *Monroe* is now officially *GCH Devita's Breaking All The Rules at MeadowView*. *Monroe* is a new Grand Champion in 3 weekends out as a Special!! *Monroe* had quite a year, 6 Best Puppy, 5 Best Puppy Toy Group 1s, 4 Best Puppy In Shows. Looking forward to watching her in 2015.

**Northern Lights Kennel:** *Northern Light's Ciara, BN, RN, WPD* was awarded the SHCA's 2013 Highest Scoring Siberian in Rally Novice. **Sheila Blanker's** *Shiya (Northern Light's Shiya Arian)* was a busy girl in November and December. *Shiya* qualified in Beginner Novice B for her second leg, scoring 194 (out of a possible 200) and placing second. At the same show in the afternoon she qualified in Rally Novice B for her second leg in Rally Novice as well. *Shiya's* score in Rally Novice was a wonderful 98 (out of 100). Good girl, good girl. And then on December 13<sup>th</sup> she decided to show the world her beautiful litter of puppies (seen here at 16 days old).

And we hear that **Ryan Blanker** was awarded the SHCA's Top Scoring Junior Handler Award for 2013!! A well deserved award that was won by a lot of hard work. way to go!





**Judith Suarez:** After being a no show in Springfield on December 6<sup>th</sup> (way too much ice up here for my taste) *Oryn* (GCH Stonebull's Remember Night Rainbows, RN) did his first leg of Beginner Novice Obedience on December 7<sup>th</sup> – 195 and second place (beat out of first by half a point). He lost three of those points all by himself with a failure to sit (end of heeling pattern had us up against the ring gates looking out into audience and – well – he wanted to stand in a perfect self stack for that). I lost us 2 point – three momentary tight leash and I touched him on the head when I positioned him to sit for the recall. I



## Editor's Rant:

So folks, in order to generate this month's Show News I had to spend time (a lot of time!) wandering around on the web and scrolling through Facebook pages searching for news, any news.

It's not that you all aren't winning and/or don't have neat things to report – it's that you are NOT sending them to either Peg or me.

That's a problem. I know I missed a lot of potential news. But all I had to go by were items I vaguely remembered seeing come across my own facebook newsfeed. Then I had to figure out when I saw it and go track it down. While I'm sure that was an educational experience – it definitely fell firmly into the category of "I don't have this kind of time to spend."

The fact is that if we as a membership do not want to have this news, I can easily delete the category. What we can not do is believe I will track this stuff down. It's not the best use of my PVKC volunteer time and it is unfair overall – I will only have access to the stuff that my facebook "friends" post.

I do have a compromise to offer. I realize that many of us simply post our news to our facebook pages and that, once recorded, we don't think to put either Peg or I in the loop. I don't mind collecting the news. BUT I can't collect what I do not know about. IF you post to your facebook, I will collect it – IF AND ONLY IF – you tag either the PVKC facebook page or me personally in your post.

Or take the equally simple way out, copy your information into an e-mail and send it to Peg ([pegvohr@earthlink.net](mailto:pegvohr@earthlink.net)) or to me ([handart@sover.net](mailto:handart@sover.net)).

And send pictures – I love pictures and look how beautifully they come out now that we are electronic.

Otherwise, No news sent – no Show News column!

Thanks –

Judith (who is often cranky while acting as your Editor)



## **Calendar of Events**

### **PVKC 2015**

Newsletter Deadline January 26, 2015

---

#### *February*

Board of Directors, Feb 2

#### *March*

Board of Directors, March 2  
General Meeting – Monday, March 16

#### *April*

Board of Directors, April 7  
PVKC All-Breed Show – April 18; Springfield, MA  
PVKC Health Clinic, April 26

#### *May*

Board of Directors, May 4  
Awards Banquet; May 21

#### *June*

Board of Directors, June 1

#### *July*

Board of Directors, July 6  
PVKC Picnic; July 16

#### *August*

PVKC All-Breed Show – August 1, Greenfield MA  
Board of Directors, Aug 3

#### *September*

Board of Directors, Sept 14  
PVKC Agility Trials, Sept 12-13  
General Meeting, Sept 21

#### *October*

Board of Directors, Oct 5  
Annual Election & General Meeting Banquet – Thursday, October 15

#### *November*

Board of Directors, Nov 2

#### *December*

Board of Directors, Dec 7  
PVKC Holiday Party, Dec 14





## 2015 PVKC Membership Renewal Form

Our new membership year started **January 1, 2015. Please include a \$7.50 late charge with your check.** Complete the form below and send with your check made payable to **PVKC** to:

Shane Peters, Treasurer  
91 East Road  
Orange, MA 01364

**Please Print Clearly!! And please complete both sides of this renewal form.**

Name \_\_\_\_\_

Street \_\_\_\_\_

City \_\_\_\_\_ State \_\_\_\_\_ Zip \_\_\_\_\_

Telephone \_\_\_\_\_ E-mail \_\_\_\_\_

Breed(s) \_\_\_\_\_

**Check one:** If you have been an Associate member for one year or more, you may choose to become a PVKC Regular Member. Regular Members are expected to attend two general club meetings a year.

☐ Regular Member (voting) - \$15.00 Plus \$7.50      ☐ Associate Member (non-voting) - \$ 15.00 Plus \$7.50      ☐ Junior Member - \$5.00 Plus \$7.50

**Check one:** All newsletters will be delivered electronically in 2015. If you have special circumstances please check here: I must receive my PVKC Newsletter (*Pioneer Tails*) ☐ via USPS

**Please circle the dog activities you are involved in or would like to learn:**

Conformation   Obedience Rally   Agility   Tracking   Therapy Dog   Flyball   Herding   Lure Coursing

Earthdog   Service Dog   Couch Potato   Clicker Training   Search & Rescue   Field Trials

Hunt Test   Drafting & Carting Work   Nosework   Other \_\_\_\_\_

**Check one:**    \_\_\_\_\_ Currently a Breeder    \_\_\_\_\_ Not Currently a Breeder

**PVKC is an active Club with many annual events. To support our continued level of events and activities, PVKC members are expected to help each year. In which of the following would you like to volunteer for 2015 (check a minimum of two items from the list of events and volunteer opportunities):**

*Continues on other side*



**Events:***April AKC/AB Point Show (Springfield MA, run through MB-F):*

☐ Breed Ring Stewarding                      ☐ Obedience/Rally Stewarding  
☐ Set up & Clean-up (2 hour commitment)                      ☐ Help in Club Tent

*Spring Health Clinic (Greenfield MA):*

☐ Assist with dog handling                      ☐ Assist with paperwork  
☐ Shepherd participants on the day of the event

*August AKC/AB Point Show (Greenfield MA, run completely with PVKC members):*

☐ Breed Ring Stewarding    ☐ Obedience/Rally Stewarding    ☐ Gate (collecting parking fees)  
☐ Set up (Friday before show)                      ☐ Clean-up (late afternoon day of show)  
☐ Help in Club Tent                      ☐ Parking                      ☐ Drivers (for judges from and return to airport)  
 Hospitality: ☐ providing goodies for show                      ☐ working day of show

*September Agility Trial (Westfield MA) Two and a half day event:*

☐ Set-up (Friday before show)                      ☐ Help in Club Tent (days of show)  
☐ Take-down/Clean-up (Sunday late afternoon)  
 Hospitality: ☐ providing goodies for show                      ☐ working day(s) of show

*September Tracking Test (Greenfield MA) Two day event:*

☐ Lay Track                      ☐ Drivers (for judges – day before test and/or day of test)  
 Hospitality: ☐ providing goodies for test                      ☐ working day(s) of test

**Volunteer Opportunities:***Training Committee:*

- ☐ Assist at scheduled training classes (being present as the PVKC representative: opening, collecting money for drop-in classes, supervising participants, closing – Brattleboro VT on Wednesday nights and Saturday mornings – commitment of one evening or morning 3 or 4 times a year)
- ☐ Act as a class assistant for a beginner or advanced beginner class (Brattleboro VT on Wednesday nights or Saturday mornings – commitment of one evening/morning for a 6 week session)
- ☐ Assist at a special event like a CGC Test or a rally/obedience show ‘n go
- ☐ Plan or co-ordinate a special event like a CGC Test or a rally/obedience show ‘n go

*Administration:*

- ☐ Serve on the Board of Directors
- ☐ Serve on a committees such as ☐ Programs or ☐ Membership or ☐ event committees
- ☐ Act as legislative liaison, tracking and reporting on various bills in VT, NH and MA
- ☐ Assist in planning and administrative details necessary for AKC All Breed Point Shows

*Other (please specify):* \_\_\_\_\_**I agree to abide by the American Kennel Club Care and Condition Policy.**\_\_\_\_\_  
*Signature*\_\_\_\_\_  
*Date*



## Training Page

**Leigh Apanell**– Leigh is not a PVKC member, but she has spent a lot of training time with us as she worked with her amazing little frenchie, *Moxie*. And the training sure paid off as Moxie finished her RN on December 7<sup>th</sup>. Leigh shared the following with us: “Introducing *Sweet Moxie May*, CGC, RN . . . she went 3 for 3 and earned her Rally Novice Obedience title!! . . . not so easy study!! Thank you to our great trainers, Debra Theriault and Caryl-Rose Pofcher!!”



This is *Cooper* (*Rott Irons C Me Rollin v Quintessential*). He is owned and trained by a new member – **Amber Goodnow**.

*Cooper* started in our AKC Puppy Class, has finished his Beginner Obedience Class, and is moving on to our Advanced Beginner Class starting January 14<sup>th</sup>.

Now that’s the way to start a dog off in life – Yay **Amber** and *Cooper*. Looking forward to reporting your conformation wins and Obedience challenges for many years to come.





## PVKC Training Schedule

### PUPPY K CLASS

#### New Classes Begin

MONDAY, Jan 19th Greenfield, MA

For information, please contact

Peg Vohr at (413) 498-2609

or email Peg at [pegvohr@earthlink.net](mailto:pegvohr@earthlink.net)

SATURDAY, Jan 24th Brattleboro,  
VT

For information, please contact

Judith (802) 722-9848

or [handart@sover.net](mailto:handart@sover.net)

### Vermont PVKC Classes:

Obedience, Rally, &  
Breed Handling  
Brattleboro, VT

Drop-in Classes running weekly January 14 -  
February 18

For information, please contact

Judith Suarez at (802) 722-9848

[handart@sover.net](mailto:handart@sover.net)



***It's Winter – Remember to check the  
PVKC Facebook Page for Cancellations  
due to weather!!***

[www.facebook.com/pages/Pioneer-Valley-  
Kennel-Club/198067530208377](https://www.facebook.com/pages/Pioneer-Valley-Kennel-Club/198067530208377)

**Come!**



# The Institute of Canine Biology

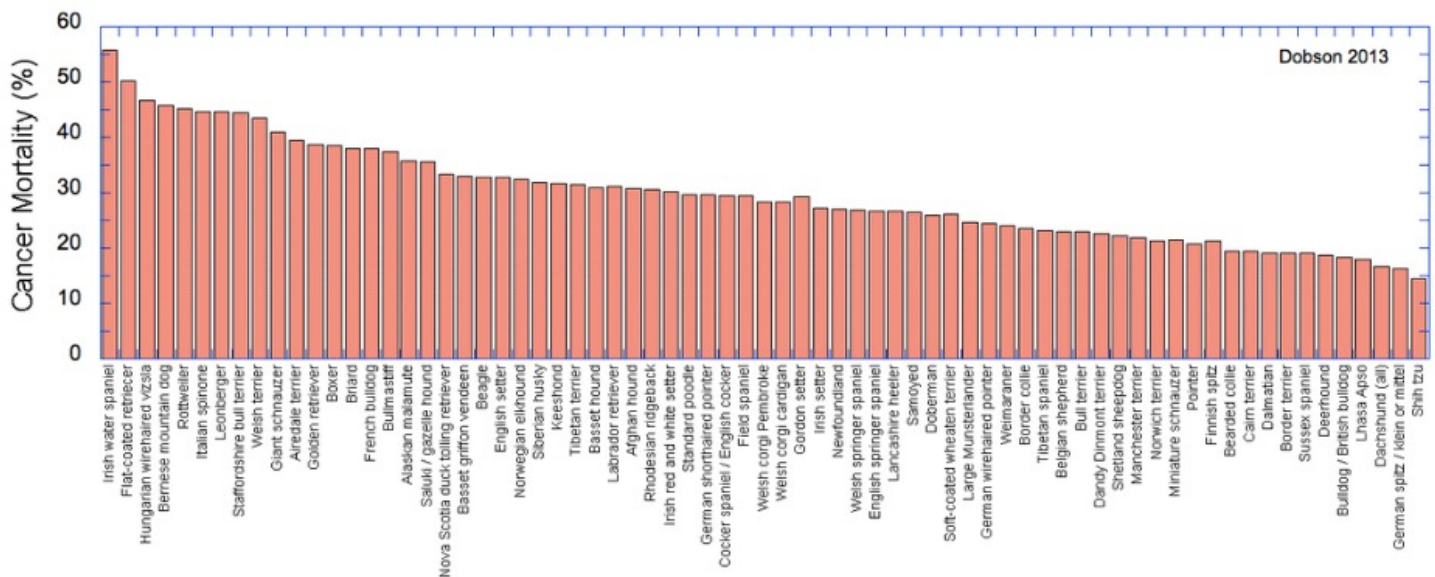
<http://www.instituteofcaninebiology.org/blog/why-do-dogs-get-cancer>

## Why Do Dogs Get Cancer – 12/31/2014

By Carol Beuchat PhD

*(printed in its entirety without changes, additions or deletions from the Institute of Canine Biology Blog)*

Some breeds seem to have much higher rates of cancer than others. Flat-coated Retrievers, Bernese Mountain Dogs, and Golden Retrievers are a few breeds that seem to be getting hit hard. There are some good breed-specific data on cancer in purebred dogs that I've summarized on the Cancer page ([www.instituteofcaninebiology.org/cancer.html](http://www.instituteofcaninebiology.org/cancer.html)) in the "Health Data" section of the ICB website, and I've reproduced the relevant summary graph here.

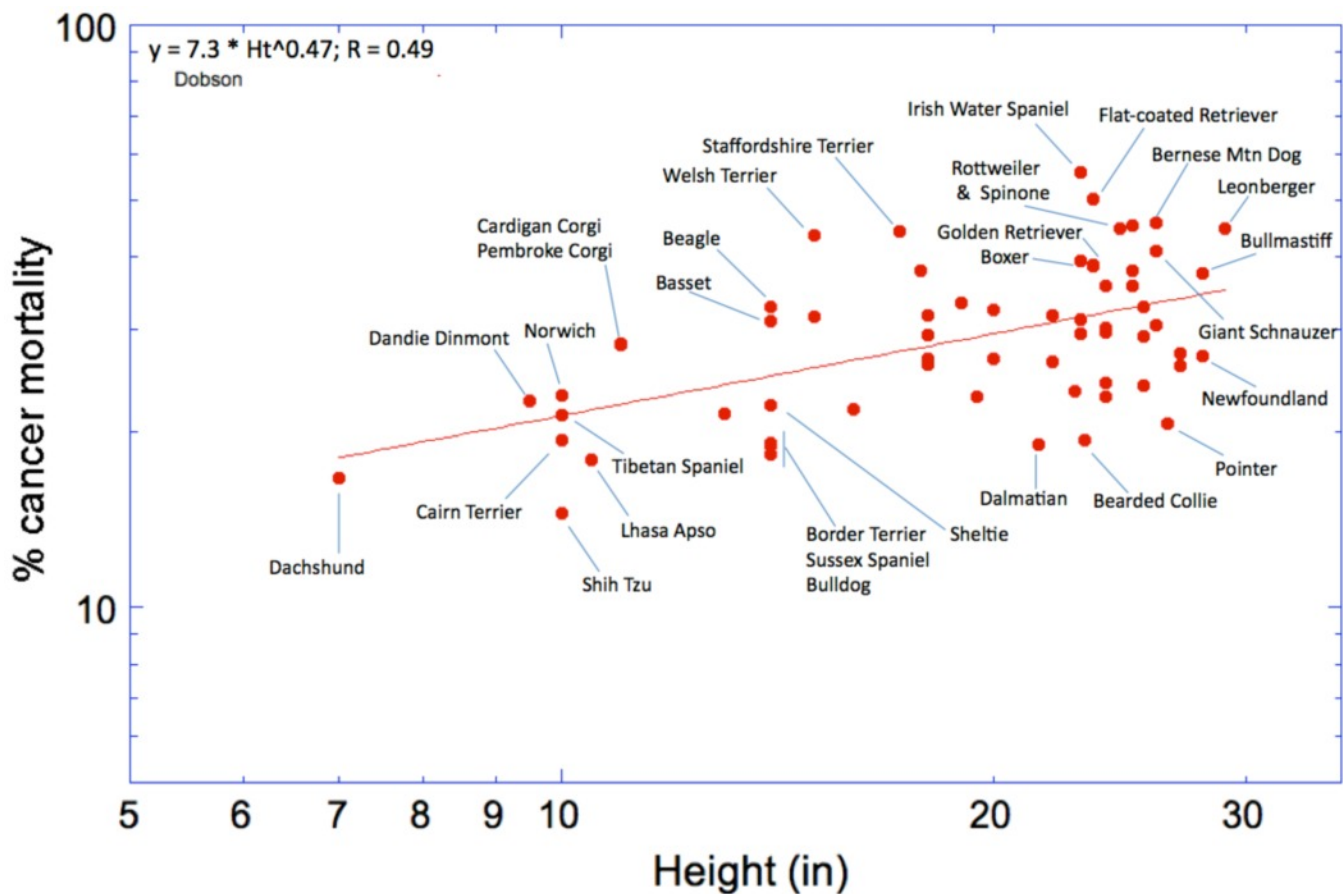


The clear losers here are the Irish Water spaniel, Flat-coat, Wirehaired Vizsla, and Bernese Mountain Dog, but there are many breeds that suffer more than 30% mortality due to cancer. At the other end, the Shih Tzu, German Spitz, Dachshund, and Lhasa Apso fare better than most. These data are from a survey study, and of course cancer can occur in any breed and there are no doubt Flatcoats and Berners that are cancer free into ripe old age (I hope so). But we can take these data as a general indication of breed susceptibility.

An interesting thing about cancer in dogs is that large dogs seem to have higher rates of cancer mortality than smaller dogs. I took the same data in the graph above and plotted it as a function of height at the withers, and you can see from the resulting graph (below) that mortality from cancer increases with size in dogs. (Note that the axes have been logged so the scale of x and y axes is not linear).

*Editor's Note – Educational article with plenty of food for thought, particularly for those involved in large breed dogs. And yet, in my experience, we just keep breeding them larger and heavier. And then we are sad and confused as more and more of our lines develop cancer.*





There are a few interesting things here to notice. First, bigger dogs have more cancer. This could perhaps be related to a hormone called IGF1 (insulin-like growth factor) ([www.omim.org/entry/147440](http://www.omim.org/entry/147440)), which has higher levels in larger animals and is also linked to increased risk of cancer. In fact, there is a population of people in Ecuador in which the disorder known as Laron syndrome occurs, which is caused by a mutation in the growth hormone receptor (GHR) gene. These patients have very short stature, and they also very rarely get cancer or diabetes. This seems to be linked to abnormally low levels of IGF1 - lower levels of IGF1 reduce the risk of cancer and other age-related disorders.

So, are IGF1 levels higher in larger dogs (or lower in smaller dogs)? It seems so (Spichiger et al 2006; Kimberly et al 2011) - Spichiger et al 2006

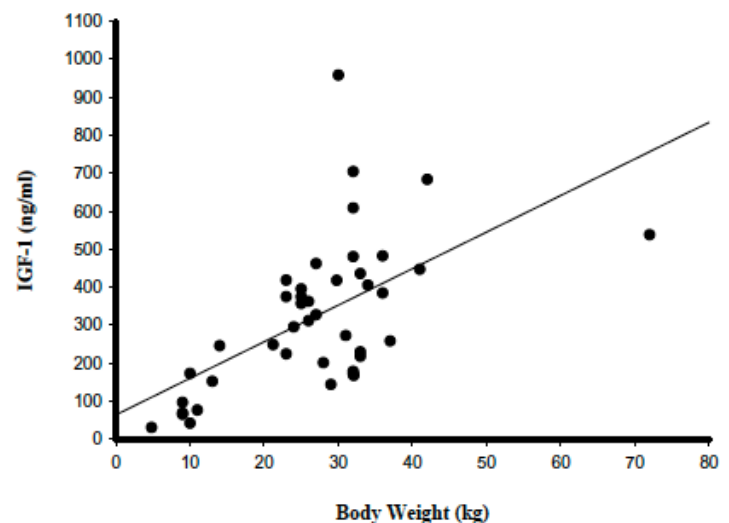


Figure 1. Relationship between body weight and plasma IGF-1 concentration in healthy dogs (C) ( $r_{sp} = 0.6$ ;  $P < 0.001$ )



Could selection for large size in dogs be incidentally increasing the rates of cancer? Who knows, but it seems like something worth looking into.

The other interesting thing about my graph of cancer mortality vs height is that there is a lot of scatter around the line. For breeds of a particular height, cancer mortality can vary two-fold or more. For instance, for their size, the Shih Tzu has an exceptionally low rate of cancer, while the cancer mortality of Welsh and Staffordshire Terriers is much higher than you would expect for their size. Among larger breeds, the Irish Water Spaniel, Bernese Mountain Dog, and Flat-coated Retriever are still stand-outs, while the cancer rates in the Pointer and Newfoundland are relatively low.

Tossing all of these numbers onto a graph as we did at the top, you can easily spot the breeds at the high and low ends of the scale. But this doesn't reveal the underlying and very important relationship between cancer mortality and size. It raises two very interesting questions -

- 1) why do larger animals have higher mortality from cancer, and
- 2) why do some breeds have much lower rates of cancer than other breeds of about the same size?

Boy, wouldn't we like to know.

Dobson JM 2013 Breed-predispositions to cancer in pedigree dogs. Veterinary Sci 2013; doi 10.1155/2013/941275

Kimberly AG, LM Hughes, & MM Masternak. 2011. Connecting serum IGF-1, body size, and age in the domestic dog. AGE 33: 475-483.

Spichiger, AC, K Allenspach, Y Zbinden, MG Doherr, S Hiss, JW Blum, & SN Sauter. 2006. Plasma insulin-like growth factor-1 concentration in dogs with chronic enteropathies. Vet Med 51: 35-43.

You can learn more about the genetics of dogs in ICB's online courses.  
<http://www.instituteofcaninebiology.org/courses.html>

Visit our Facebook Groups

ICB Institute of Canine Biology – <http://www.facebook.com/theinstituteofcaninebiology?ref=hl>  
...the latest canine news and research

ICB Breeding for the Future – <http://www.facebook.com/groups/ICBBreedingForTheFuture/>  
...the science of animal breeding